

Jordan Downs Redevelopment

Family^{1st}

improving the quality of life for all residents



**Support
Resources
Opportunity**

Providing support, resources and opportunity to increase family economic success.



Family First Plan Goals & Objectives

Connecting Residents to Opportunities that Meet their Needs

- **To positively transform resident and neighborhood life by expanding economic and human service opportunities.**
- **To increase family economic success.**

The primary goal of the Family First Plan is to help residents increase their family economic self sufficiency and live successfully in a new mixed income community. The plan also embraces the following objectives:

1. Families have greater financial security and economic success
2. Families are healthier
3. Families are more engaged in the community
4. Families have housing affordability
5. Families reach education goals for themselves and their children

What are the Services that will be Available for Me and my Family?

- **Family-Based Case Management**
- **Workforce Development including employment training and job placement**
- **Adult Education and Literacy**
- **Youth Development**
- **Early Childhood Education**
- **Safety and Security**
- **Health and Wellness**
- **Programs and services for children, youth and young adults**
- **Programs and services for the elderly and individuals with special needs**
- **Transportation assistance (bus tokens and vouchers, shared ride)**
- **Childcare and infant care**
- **Counseling for individuals and families**
- **Financial literacy and homeownership counseling**
- **Programs to address safety and security**
- **Programs to address health and wellness including health education, prevention and chronic health management**

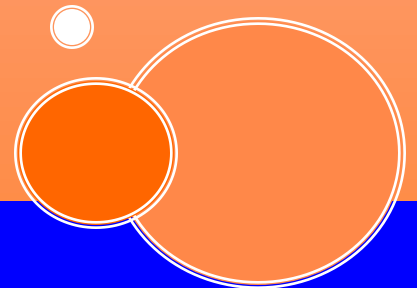
Working with Families Where They Are

What Can I Expect?

Steps in the Process

Each household will be assigned a case manager. You will have the opportunity to ask questions at your one-on-one meeting with a case manager. When you meet one-on-one with your case manager you will be asked to complete a family needs assessment to determine:

- Your needs and preferences for employment, supportive services, health and wellness services.
- The needs of your dependent children.
- Your goals and your family's goals over the next 5 years.
- The actions that will be necessary to achieve these goals.
- The programs and services you may be eligible for.
- Any special needs (e.g. medical issues, disability, etc.) that your family has.
- Based on the family assessment, your case manager will refer you to programs and services that best meet your needs.
- Your case manager will track results and outcomes and will continue to work with you for at least 5 years.



PRIMARY COMPONENTS OF CASE MANAGEMENT MODEL

The Family First Plan will take place as the redevelopment is happening at Jordan Downs. A component of the plan is to have case managers work with the families and support relocation counselors to ensure that families successfully transition into their new home. Construction will be done in phases starting with the use of the vacant “factory site,” providing space for residents to be moved on-site within Jordan Downs.

Jordan Downs residents in “good standing” following their current lease agreement have the option to move into the revitalized community. HACLA will adopt updated continued occupancy criteria at Jordan Downs. Case managers will be essential in helping families meet any new rules so families can be successful.

***Family Needs Assessment** – Case managers will begin working with families long before any construction begins at Jordan Downs. A family needs assessment will be performed by a case manager to ensure that the resident’s needs (social, health, and economic) are identified and incorporated into their family action plan. This assessment will also identify potential barriers that families may face when relocating on-site.*

***Family Action Plan** – After the assessment, families will develop with the guidance of their case manager a family action plan. This will be a guide to help families reach their goals. Family economic success will be defined by each family and reflected in their plans. Case managers will provide support and connect residents to resources that meet their needs. During the redevelopment, case managers will assist families to remain on track with their action plans and work with relocation counselors towards a successful transition into the revitalized community.*

***Family Tracking** – The plan assumes that families will be tracked over time and HACLA will invest in a system to follow outcomes related to family success.*

Goals and Strategies

Workforce Development:

1. Develop and/expand employment skills and technical training.
2. Develop and implement a transitional jobs program.
3. Expand access to work readiness preparation programs.
4. Integrate basic employment placement throughout workforce development strategy.
5. Expand access to adult literacy and basic education
6. Optimize local employment through the Jordan Downs Redevelopment.
7. Develop a workforce strategy with large area employers.
8. Provide incentives for work and program participation.
9. Assign each household a career coach.

Youth Development and Early Childhood Education:

1. Provide opportunities to expand youth experiences.
2. Encourage greater parental involvement in youth programming.
3. Focus on educational achievement for older children.
4. Create Safe Passages for residents to access the array of services in the community.
5. Develop a strong early childhood education initiative.

Safety and Security:

1. Implement the Gang Reduction and Youth Development Action (GRYD) Plan for Jordan Downs.
2. Invest in expanded safety initiatives that support and complement GRYD.
3. Address safety and security through physical design.

Health and Wellness:

1. Integrate a comprehensive health, wellness and prevention orientation throughout the community design and human capital programming.
2. Increase access to existing healthcare services including hospitals, specialty care access, community clinics, and county health services.
3. Encourage a young adult focus in health education and wellness.
4. Integrate fitness opportunities throughout site in physical form and with the HCP program.
5. Create a comprehensive community garden/urban farm with a youth training component and encourage healthy food and beverage options.
6. Provide accessible mental health services with privacy and without stigma.
7. Integrate people through a variety of services to meet household needs. Monitor progress against objective criteria.
8. Secure partner(s) to develop robust program linking health and wellness, other education efforts and workforce connections.



Family Resource Center:

The master plan includes the development of a 50,000 square feet resource center that will include programs and services on site. Functions at the center will include:

- Early childhood education and child and infant care
- Health and wellness/clinic, and fitness center
- Employment training
- Youth programs
- Education and literacy, arts and culture, computer/technology lab
- Commercial kitchen and storage
- Shared offices for partner agencies and non-profit organizations including common areas such as reception/waiting areas and recycling
- Meeting and conference rooms for presentations, films, talks, and workshops, art or cultural exhibits showcasing local artists

Limited retail including a café with outdoor seating, post office or mailing services, bicycle repair shop, etc, and informational kiosks.



Acknowledgement

The Family First Plan could not be possible without the input and generosity of residents who participated in focus groups, community meetings and a resident survey (83% of all households responded).

Thank you to Congressional, County, and City leaders and agencies, local community organizations, businesses, and other stakeholders who provided invaluable support and direction on the Family First Plan. Also HACLA and the consultant team comprised of EJP Consulting Group that was assisted by Marva Smith and Maya Dunne.

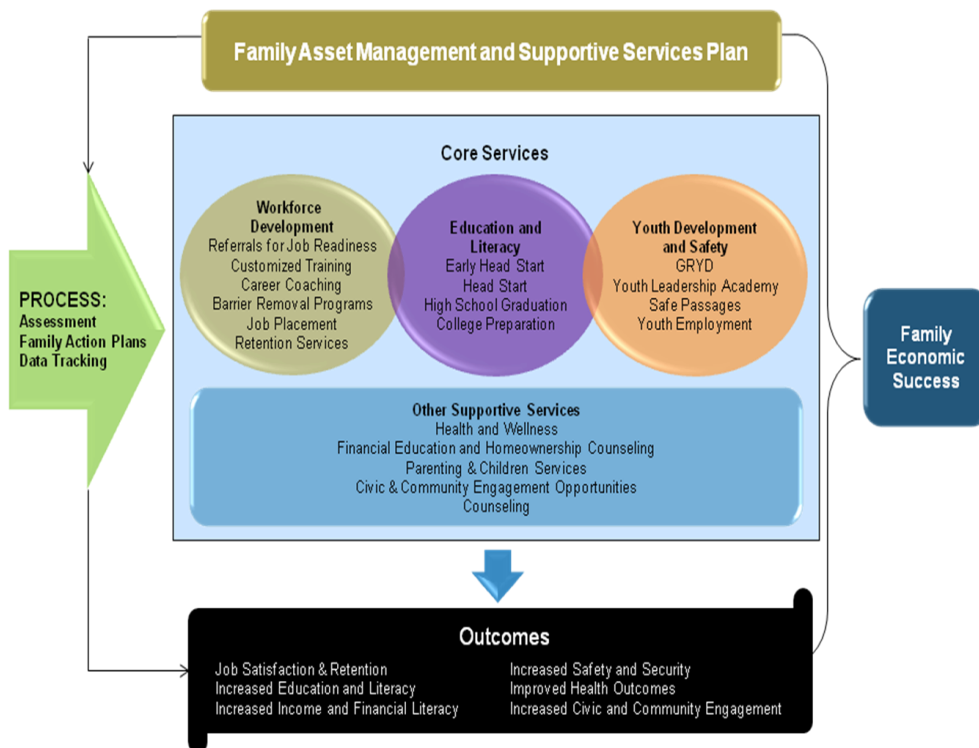
Special thanks to your JDCAC members:

Keyon Johnson, RMC Vice President
 Michael Agustin, RMC Treasurer
 Evelyn Warren, JD Resident
 Darian Armstrong, JD Resident, Youth
 Marcell Coleman, JD Resident, Youth
 Martha Fausto, JD Resident, Youth
 Daniel Fausto, JD Resident, Youth
 Miguel Plancarte, JD Resident
 Guadalupe Laureano, JD Resident
 Leticia Martinez, JD Resident
 Richard Alford, Community Member
 Cassandra Savage, Former RMC President
 Martin Peery, JD Manager
 Evelyn Mahmud, LAUSD
 Betty Day, Watts Gang Task Force
 Rev. Gregory Bynum, Church of the Light House
 Father Peters, St. Lawrence Catholic Church
 John Frank Hernandez, Watts Century Latino Org.
 Arturo Ybarra, Watts Century Latino Org.
 Charlotte Brimmer, CRA, City of Los Angeles
 Gregory Brown, Watts Neighborhood Council
 Henry Broomfield, Watts Neighborhood Council
 Janet Clark, LAUSD, Maxine Waters' Employment Preparation Office
 Chris Peason, Mayor's Office
 April Lawrence, Congresswoman Maxine Waters Office
 Emada Castillo, LAPD
 Phillip Tingirides, Captain III, LAPD, Southeast Area
 Reginald Pope, Bethel Missionary Baptist Church

Also thanks to Jordan Downs Block Captains !



Family First Development Model



Housing Authority of the City of Los Angeles

Family First Plan Contact:

John King, Director of Policy and Planning

2600 Wilshire Boulevard, 3rd Floor

Los Angeles, CA 90057

Phone: 213.252.5429

Email: john.king@hacla.org

www.HACLA.org

www.JordanDowns.org